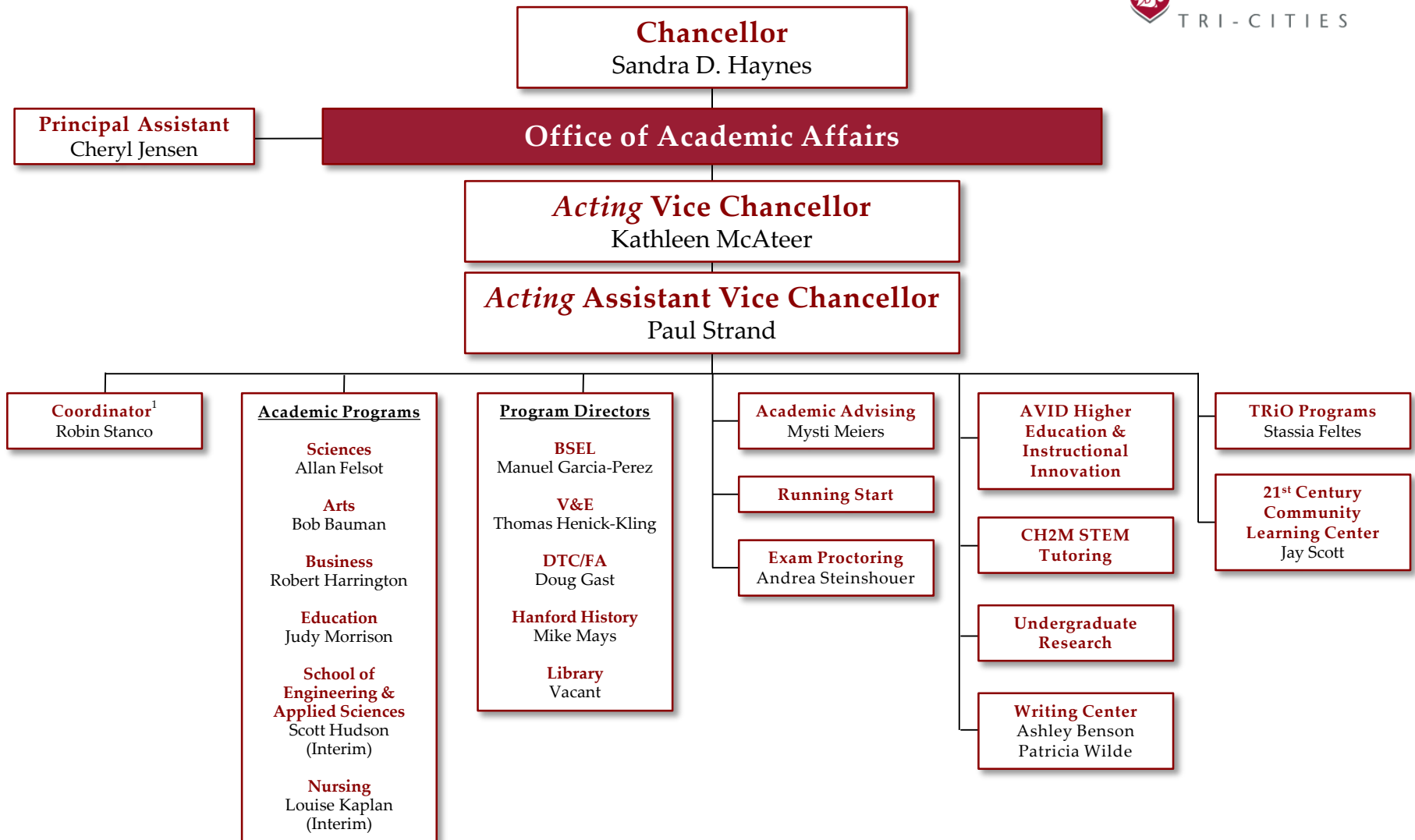


# ORGANIZATIONAL CHART

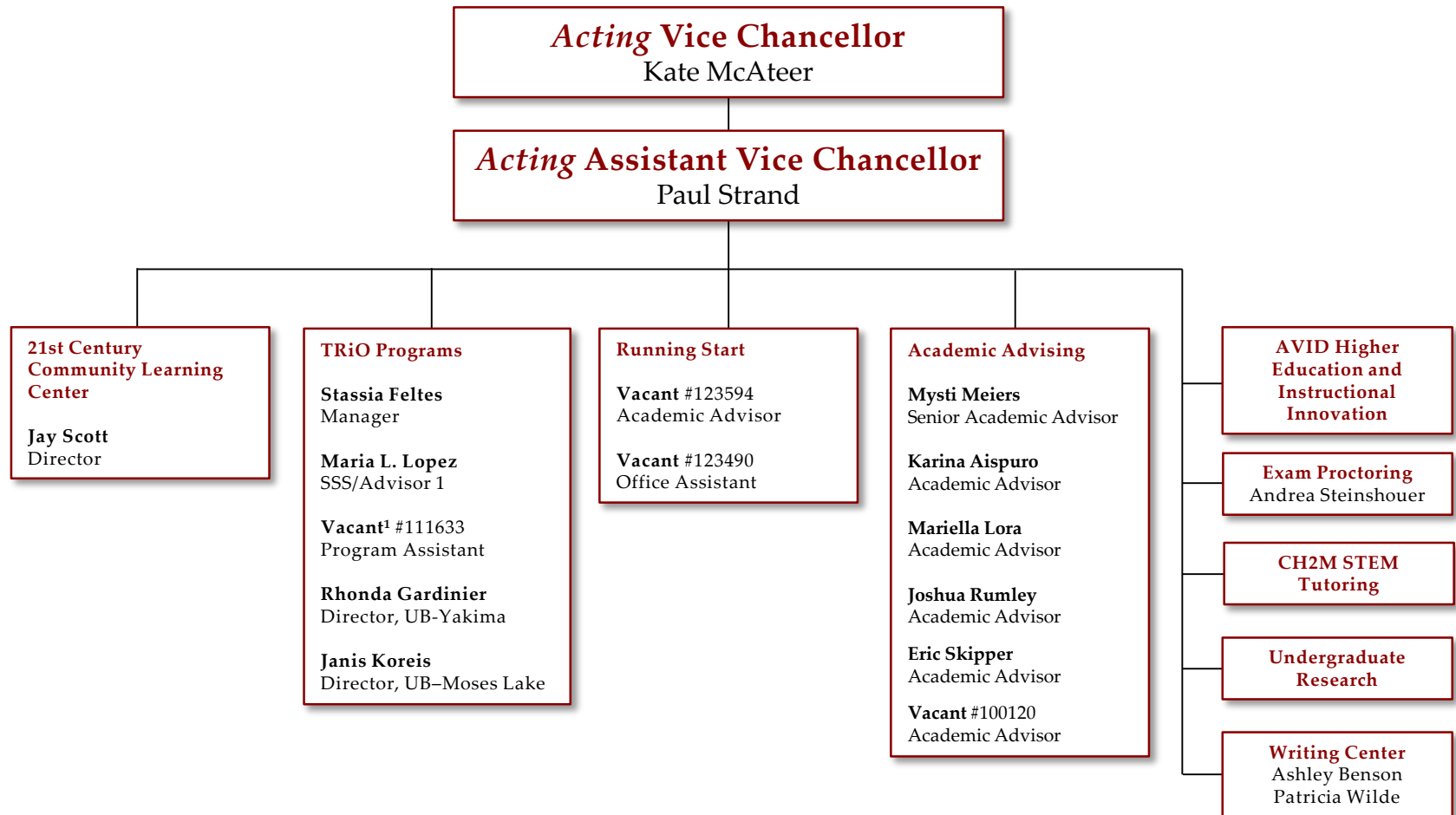
## OFFICE OF ACADEMIC AFFAIRS



<sup>1</sup> 0.5 FTE

# ORGANIZATIONAL CHART

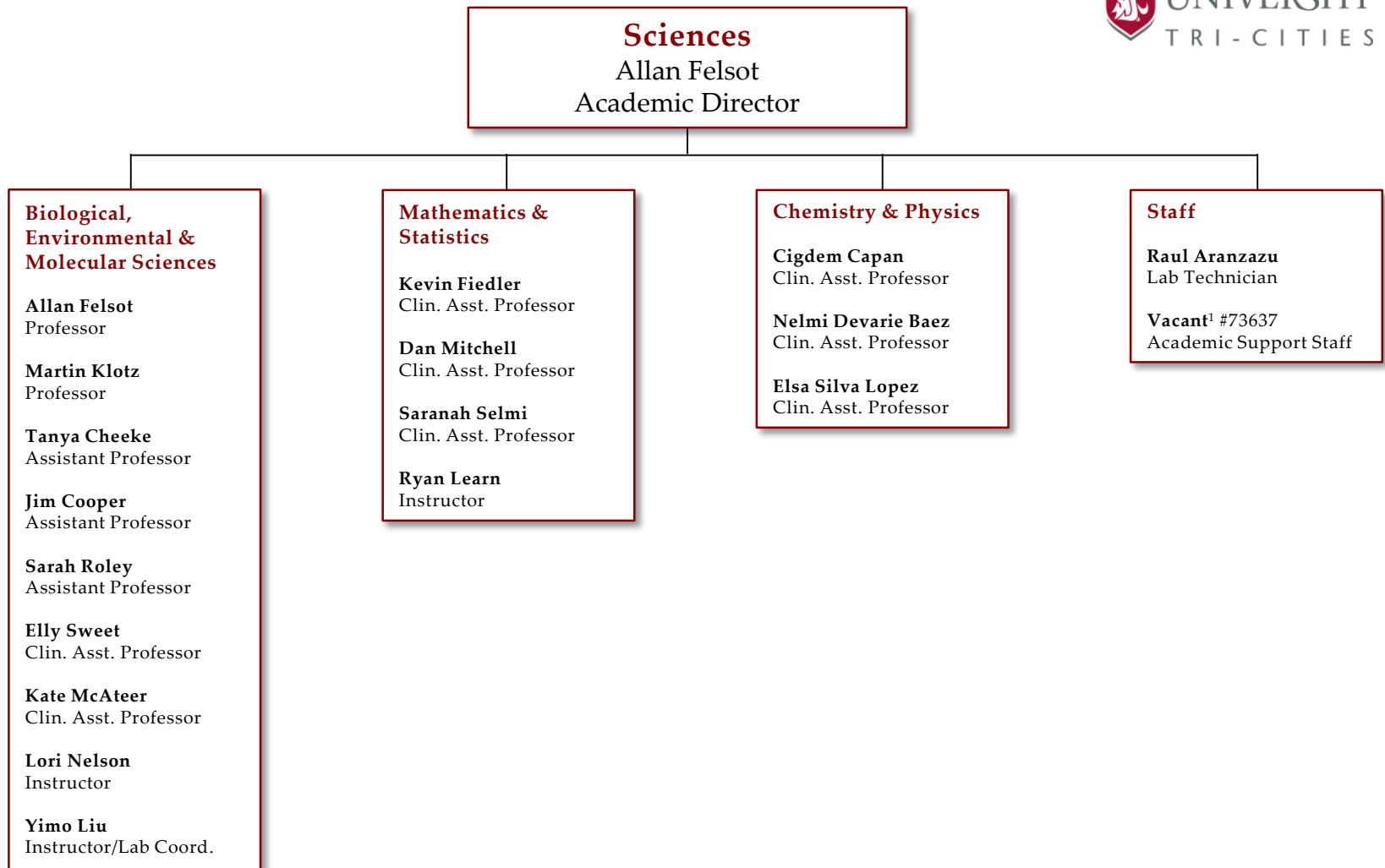
OFFICE OF ACADEMIC AFFAIRS  
Undergraduate Academic Advising & Experiential Learning



<sup>1</sup> 0.75 FTE

# ORGANIZATIONAL CHART

OFFICE OF ACADEMIC AFFAIRS  
College of Arts & Sciences



<sup>1</sup> 0.8 FTE

# ORGANIZATIONAL CHART

OFFICE OF ACADEMIC AFFAIRS  
College of Arts & Sciences



**Arts**  
Robert Bauman  
Academic Director

## Social Sciences

**Mark Mansperger**  
Clin. Assoc. Professor

**Katie Banks**  
Instructor

## Fine Arts

**Peter Christenson**  
Associate Professor

**Doug Gast**  
Associate Professor

**Sena Clara Creston**  
Clin. Asst. Professor

**Phillip Mudd**  
Instructor

## English & Foreign Languages

**Michael Mays**  
Professor

**Patricia Wilde**  
Assistant Professor

**Vanessa Cozza**  
Clin. Asst. Professor

**Gibran Escalera**  
Clin. Asst. Professor

**Nora Kuster**  
Clin. Asst. Professor

**Ashley Benson**  
Instructor

**Olga Borges**  
Instructor

**Jennifer Lodine-Chafey**  
Instructor

**Robin Mays**  
Instructor

**Francisco Serratos**  
Instructor

## History

**Steven Hoch**  
Professor

**Robert Bauman**  
Associate Professor

**Brigit Farley**  
Associate Professor

**Michael Pieracci**  
Clin. Assoc. Professor

**Tracey Hanshew**  
Clin. Asst. Professor

**Brett Bell**  
Instructor

## Psychology

**Paul Strand**  
Professor

**Stephanie Bauman**  
Associate Professor

**Sarah Tragesser**  
Associate Professor

**Allison Matthews**  
Clin. Asst. Professor

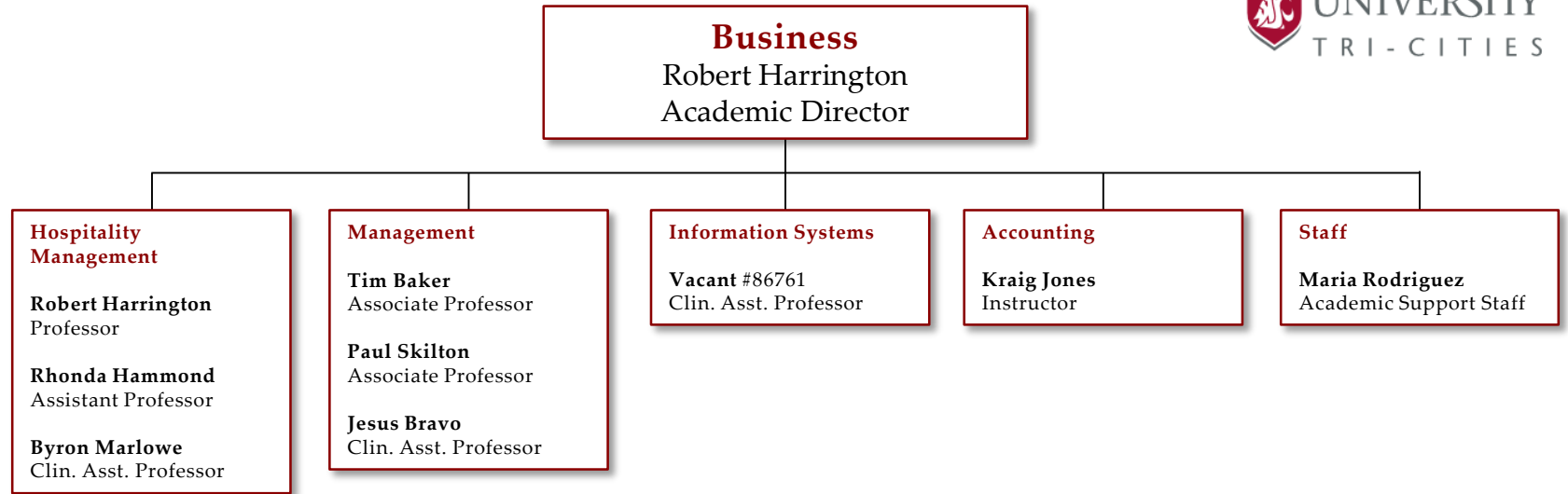
**Janet Peters**  
Clin. Asst. Professor

## Staff

**Eadie Balint**  
Academic Support Staff

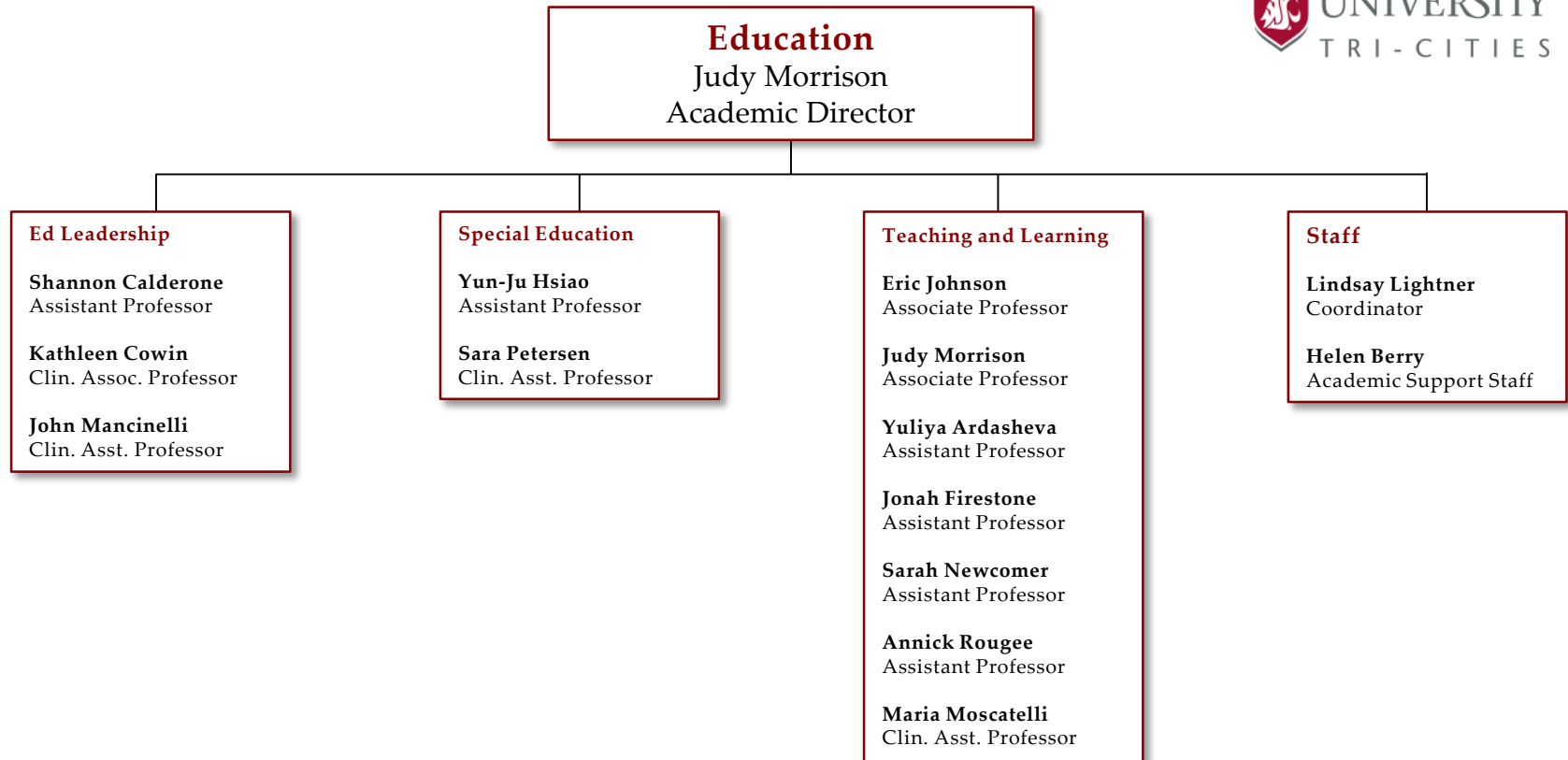
# ORGANIZATIONAL CHART

OFFICE OF ACADEMIC AFFAIRS  
Carson College of Business



# ORGANIZATIONAL CHART

OFFICE OF ACADEMIC AFFAIRS  
College of Education

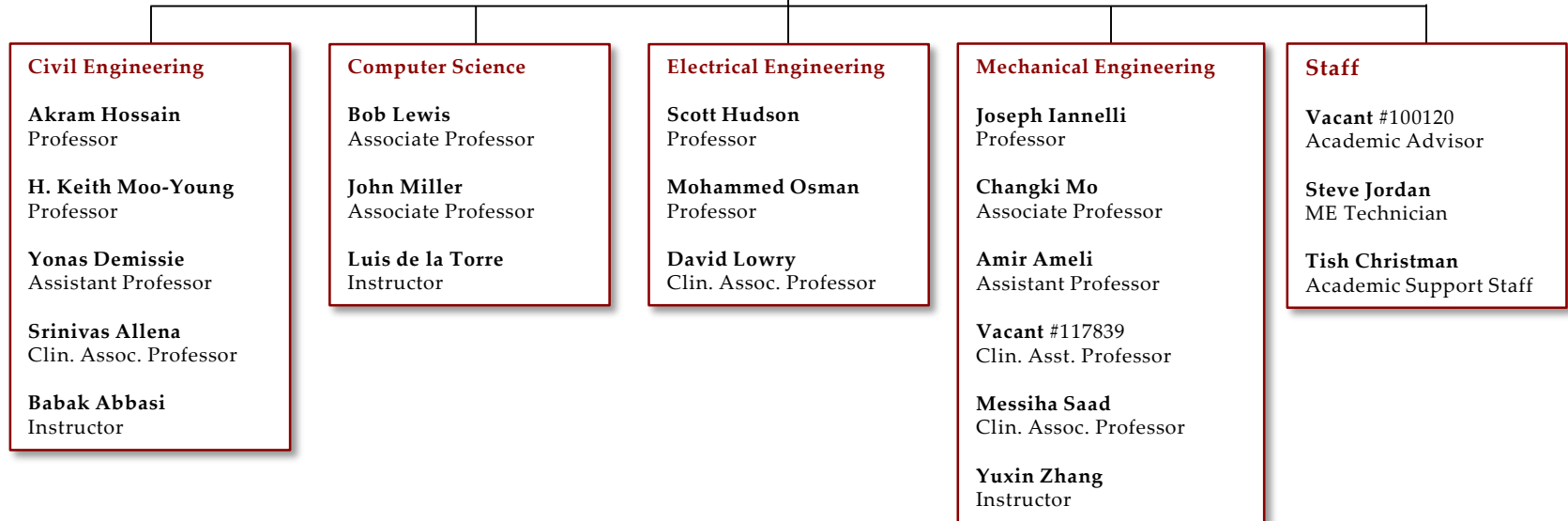


# ORGANIZATIONAL CHART

OFFICE OF ACADEMIC AFFAIRS  
School of Engineering & Applied Sciences

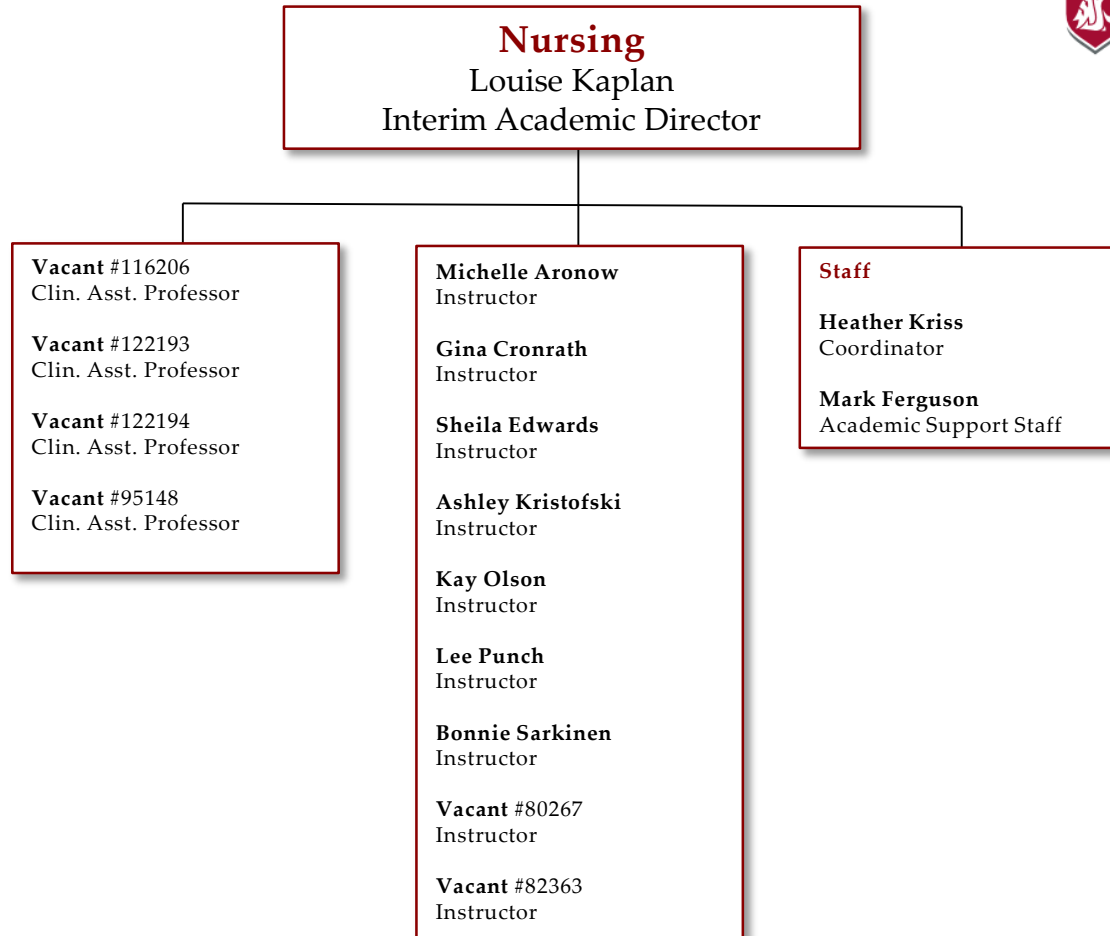


**Engineering**  
Scott Hudson  
Interim Executive Director



# ORGANIZATIONAL CHART

OFFICE OF ACADEMIC AFFAIRS  
College of Nursing





# ORGANIZATIONAL CHART

OFFICE OF ACADEMIC AFFAIRS  
Viticulture & Enology (Wine Science)

