



WASHINGTON STATE UNIVERSITY  
TRI-CITIES



# Who are We?

*We are the movers.  
The shakers. The leaders  
of the future. We are  
here to make a stand for  
a better tomorrow!  
We are...*

# COUGS!



**1,430**  
total students

**1,282**  
undergraduates

**50**  
U.S. states  
represented

**20+**  
countries  
represented

**15:1**  
student-to-faculty  
ratio

**50%**  
students of color

**46%**  
of students are first  
in their families to  
attend college

**55%**  
of students pay  
no out-of-pocket  
tuition

# Learn from the *Best!*

*Cougs are innovators, creators, entrepreneurs,  
leaders & out-of-the-box thinkers!*

At WSU Tri-Cities, collaboration brings innovation as we work together to shape globe-changing breakthroughs.

## We develop solutions:

- WSU is a **tier-1 public research university** and is ranked among the top public research universities in the nation. Students can have the unique opportunity to work alongside faculty on projects that help solve current problems and shape the future.
- Most WSU Tri-Cities students complete an internship while going to school. Partnerships with local businesses and national laboratories give students a unique opportunity to learn skills in and out of the classroom.
- Most students participate in the **Research and Design Symposium**, allowing them to showcase their work and build a research portfolio that can benefit them beyond graduation.

“The professor who changed my life 100% helped me through tough times and helped me accept that life is a journey, not a race.”  
- DESTINY K. , alumna

## Building award-winning spaces for collaboration and innovation

The newest building on campus, **Collaboration Hall** features a range of state-of-the-art science teaching laboratories, three large interactive classrooms, study and collaborative areas, an open atrium ideal for presentations and events, as well as an outdoor amphitheater that seats 100 guests.

**Yichien Cooper** is an assistant professor in the department of teaching and learning. Her research includes theories and practices of arts integration in relation to STEAM and design thinking, teaching culture competence, and community-based art education among many things. She is also a published author!



**Michelle Brown**, assistant professor of Indigenous knowledge, data sovereignty and decolonization in the DTC program. Her research focuses on science and technology studies as creative praxis for human and non-human flourishing, and her teaching centers on inclusive Indigenous futures that are firmly committed to racial justice.



**Prof. Luis DeLa Torre** teaches computer science in the School of Engineering & Applied Sciences. His research interests include high-performance computing and machine learning.



**Nelmi Devarie Baez** assistant professor of chemistry, offers tutoring sessions in the Learning Commons. He also hosts one of the best Halloween classroom presentations on campus, the exploding pumpkin experiments. Students in his course carve pumpkins and see how chemicals can create an explosive reaction.

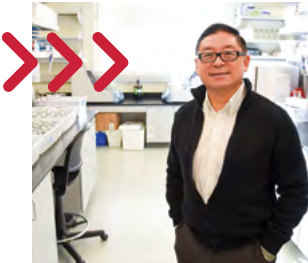
**Birgitte Ahring**, professor of biological systems engineering and chemical engineering works with biomass conversion to biofuels and high-value bioproducts or some may say, turning waste into fuel!



**Robert Franklin**, a Daytime Emmy Award nominee, assistant director of the WSU Tri-Cities Hanford History Project and teaching assistant professor of history specializes in 20th century U.S. History and the "atomic world" of WWII and the Cold War.



**Bin Yang**, associate professor of biological systems engineering, has figured out a way to successfully convert a common wood byproduct into hydrocarbon molecules that could be used as jet fuel.



**Janet Peters**, clinical associate professor of psychology has received multiple Outstanding Teaching Awards for the creative and engaging courses she has taught.



**Josh Heyne**, professor in the school of engineering and sciences is a leading expert in sustainable aviation fuels and director of the Bioproducts Science and Engineering Laboratory.

**Robert Harrington**, professor and director of the school of hospitality business management specializes in a range of topics, from studying the relationships and perceptions of food and wine pairing, to how Michelin chefs manage the innovation process, to the role that food or wine have in creating return visits by tourists.

# Graduate Career-Connected

WSU Tri-Cities prepares students for graduate school or a career after graduation. Employers love Cougs!

## We launch careers:

- **Career Center** offers resume help, career fairs and internship connections.
- Recruiters from companies such as Pacific Northwest National Laboratory, CH2M HILL Plateau Remediation Company, Hanford Mission Integration Solutions, Washington River Protection Solutions Cadwell Industries, Atkins Nuclear Solutions, Framatome, Energy Northwest, and Department of Energy are always on the look out for Cougar interns.
- **CUBS Mentorship Program** provides business students with mentors drawn from a pool of local business professionals and leaders to assist with developing career goals.
- **The Entrepreneurs in Residence Program** provides students with direct connections to successful entrepreneurs for mentorship so that students can transform their ideas into reality.
- **Study Abroad** provides students opportunities to get out of their comfort zone and learn amongst fellow Cougs in countries like: Austria, France, Germany, Denmark, Sweden, and South America.



# & Prepared



## Our students shoot for the moon!

First-year mechanical engineering student Sara Christensen was recently selected by NASA to have an out-of-this-world internship experience in southern California. She was surprised by the large number of internship opportunities available and applied for four different positions, ultimately selecting one involving a Fiber Optic Sensing System (FOSS). “WSU Tri-Cities is a great fit for me because smaller classes mean I can get help when I need it and professors are more available and provide quick responses,” she said.

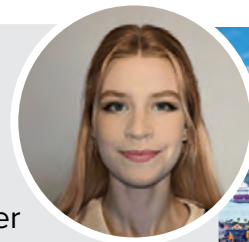
Scan to read the full story. >>>



## Our Cougar presence is worldwide!

Christina Lansing, a second-year mechanical engineering student is participating in a new exchange and research program between WSU and Sweden’s Linköping University (LiU). Lansing will begin her fellowship in fall 2023 to deepen her computer science understanding, learn in a new environment and participate in cultural activities to learn more about Sweden. “Building an international network could potentially create new job possibilities for my future and makes future travel significantly easier,” she said.

Scan to read the full story. >>>



## Before you graduate, you'll:

- **build a résumé** that sets you apart
- **make connections** that can lead to job offers
- **learn what you like** most about your field
- **gain the confidence** that only experience provides

# Supportive Cougar Community

At WSU Tri-Cities, every Cougar experience is unique. From identity-based clubs and multicultural groups to faith-based organizations and academic clubs, we support students from all backgrounds.

## We make connections:

- Classmates share study time, and professors are accessible for learning support.
- **Office of Student Engagement & Leadership** offers leadership and co-curricular experiences.
- With the **Cougar Cupboard Food Bank** and **Counseling and Wellness Services**, Tri-Cities Cougs have access to basic needs and support.

“

*“A big part of my undergraduate journey has been my involvement in various clubs, ASWSUTC, and on campus jobs. Through this experience I was able to meet so many different people, a few of which are now my best friends. I would have never met them or become a strong leader if I hadn’t gotten out of my comfort zone. I would also say make sure to enjoy every moment of your college experience because people don’t lie when they say it goes by fast.”*

*- ANMOL HOTHI, 2023 graduate*

## Find your Coug family!

ASCE - American Society of Civil Engineers

ASWSUTC - Associated Students of WSU Tri-Cities

Black Student Union

Boxing Club

Coding Cougs

Coug Wine Society

Cougs LEAD

Crimson Scrubs

Critical Care Student Nurses Association

Dreamers Club

Dungeons and Diplomas

Firearms Association

Foodie Club

Gaming Club

IV League

Makers Club

Musical Theater Club

Muslim Student Association

Pre-Health Club

SACNAS - The Society for Advancement of Chicanos/Hispanics and Native Americans in Science

Student Entertainment Board

Table Tennis Association

Volleyball Club

Winter Sports club

Women in STEM

Yoga & Wellness Club



# In the Heart of Wine Country

Explore the possibilities of Washington Wine Country.



## Wine Science Center

WSU Tri-Cities is home to the world-renowned **Ste. Michelle Wine Estates WSU Wine Science Center**, which is one of the only comprehensive wine research facilities in the world.

## Teaching Vineyard

Students gain hands-on experience cultivating a vineyard and growing wine grapes through the **Albert Ravenholt Research and Teaching Vineyard** on campus.

## Blended Learning

**WSU Blended Learning** allows students the opportunity to partner with regional wineries to gain experience in all steps of the winemaking process and produce premium wines.

“

*“I didn’t start in Viticulture & Enology. I came to WSU for Pre-Veterinary Sciences, but after taking an animal science course, I found out quickly that wasn’t the place for me. I switched over to V&E where I fell in love with the combination of biology, chemistry, business, communications, etc. All these things combine to prepare students for the workplace.”*

*- MEGAN MEHARG, Viticulture & Enology alumna, 2021 Wine Spectator Wine Student of the Year*

## Wine Beverage Business Management

The wine and beverage business management degree in the Carson College of Business prepares students to become leaders in the flourishing wine industry. Students learn about all aspects of wine business including wine production, marketing, finance, tourism and sales.

Learn more at [tricities.wsu.edu/wbm](https://tricities.wsu.edu/wbm).

## Viticulture & Enology

Washington wines have an international reputation for high quality, and WSU Tri-Cities is located in the heart of Washington wine country. You’ll get hands-on practice in laboratories, vineyards, and wineries and learn from professors who are national and international experts in viticulture and enology (wine science). Our hands-on degree programs in wine science get students ready for their careers in the vineyard or as a winemaker.

Learn more: [tricities.wsu.edu/wine](https://tricities.wsu.edu/wine).





## School of Engineering and Applied Sciences

With the School of Engineering and Applied Sciences you have the option to choose from civil, electrical, or mechanical engineering where you will build upon your talents and interests, expand your preparation through hands-on learning in internships and class projects, and realize the impact of engineering and computer science in the advancement of societies. You will engage in an educational experience that is based in theoretical, experimental, and ethical knowledge and enhanced by research, international studies, and interdisciplinary activities.

Learn more at [tricity.wsu.edu/engineering](https://tricity.wsu.edu/engineering).

### Civil Engineering

Civil engineers help communities solve problems. Civil engineering involves designing and maintaining crucial infrastructure, preserving the natural environment, and improving the quality of life for all. Those working in civil engineering use a combination of math and science to assist in the planning of water systems, electric energy generation, highways, railroads, buildings and bridges.

Learn more at [tricity.wsu.edu/engineering/civil](https://tricity.wsu.edu/engineering/civil).

### Electrical Engineering

Electrical engineering involves the design, building and maintenance of electrical equipment and technology. Electrical engineers work on various projects ranging from microchips and computers to power generators and aerospace systems. Much of the underlying technology that runs our modern world is conceived by electrical engineers.

Learn more at [tricity.wsu.edu/engineering/electrical](https://tricity.wsu.edu/engineering/electrical).

### Mechanical Engineering

Mechanical engineering plays a key role in various industries including computers, robotics, aerospace, energy, health, automation and manufacturing. Those studying mechanical engineering use motion, energy and force to design and produce machines that solve problems.

Learn more at [tricity.wsu.edu/engineering/mechanical](https://tricity.wsu.edu/engineering/mechanical).

## Tri-Cities is Tech Central

– WSU Tri-Cities is located in the Tri-Cities Research District, an area known for its science, technology engineering and math connections.

The WSU system annually hosts a 24+ hour coding event competition called the **CrimsonCode hackathon**. Students from all WSU campuses with technical and non-technical backgrounds come together, form teams around a problem or idea, and collaboratively code/create a unique solution from scratch.

WSU Tri-Cities student org. **Coding Cougs** compete annually and have won many awards from past events.

### Computer Science

This program includes courses on software design, network design, computer graphics, scientific computation, programming tools and more. In today's technological world, computer science is applicable to virtually every industry and the Tri-Cities has a huge need for computer science graduates.

Learn more at [tricity.wsu.edu/computerscience](https://tricity.wsu.edu/computerscience).

### Cybersecurity

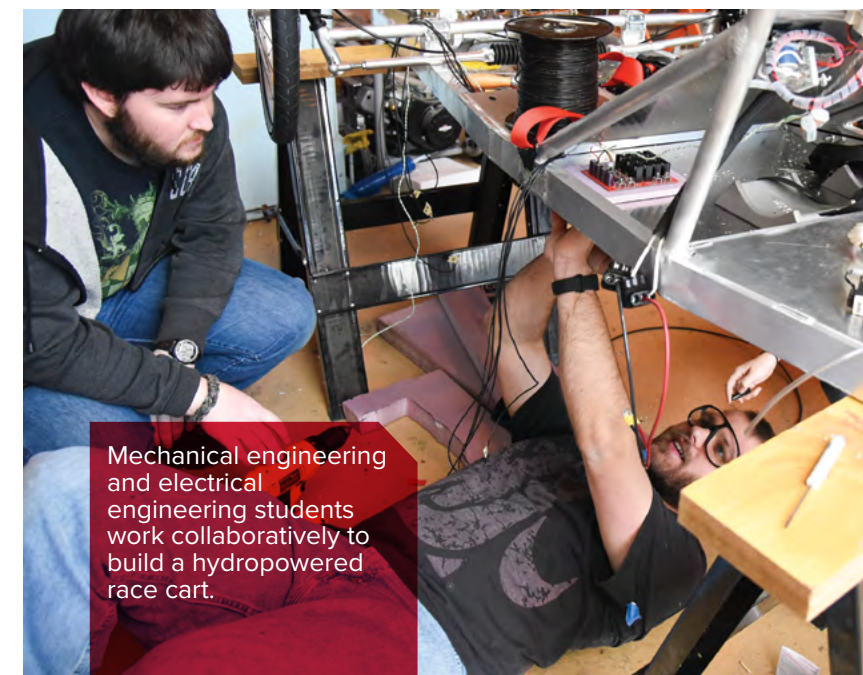
This new program starting in fall 2024 is designed to meet the fast-growing demand for computer scientists with expertise in cybersecurity. In addition to studying foundational computer science courses, students will learn crosscutting concepts and skills in confidentiality, integrity, privacy, risk, adversarial thinking, and security analytics. The curriculum emphasizes hands-on coursework and experiential learning and covers topics on security related to data, software, hardware, connection, cyber systems, and cybersecurity threats impacting organizations and society.

Learn more at [tricity.wsu.edu/cybersecurity](https://tricity.wsu.edu/cybersecurity).

## Laboratories Galore!

With over 10 labs, students have the resources to get their hands dirty and create innovative team or solo projects for inside and outside of the classroom.

- Geotech Lab
- Hydraulic Engineering Lab
- Computer Labs
- Power Lab • Circuits & Systems Lab
- Manufacturing Processes Lab
- Materials Lab
- Thermal/Fluid Lab
- Engineering Design & Mechatronics Lab
- Team Project Lab
- and more!



Mechanical engineering and electrical engineering students work collaboratively to build a hydropowered race cart.

# *From clean up to clean energy*

*WSU Tri-Cities empowers the future energy workforce through student research, collaborative learning facilities and innovative workshops for a cleaner future.*

## **Clean Energy Ambassadors Network**

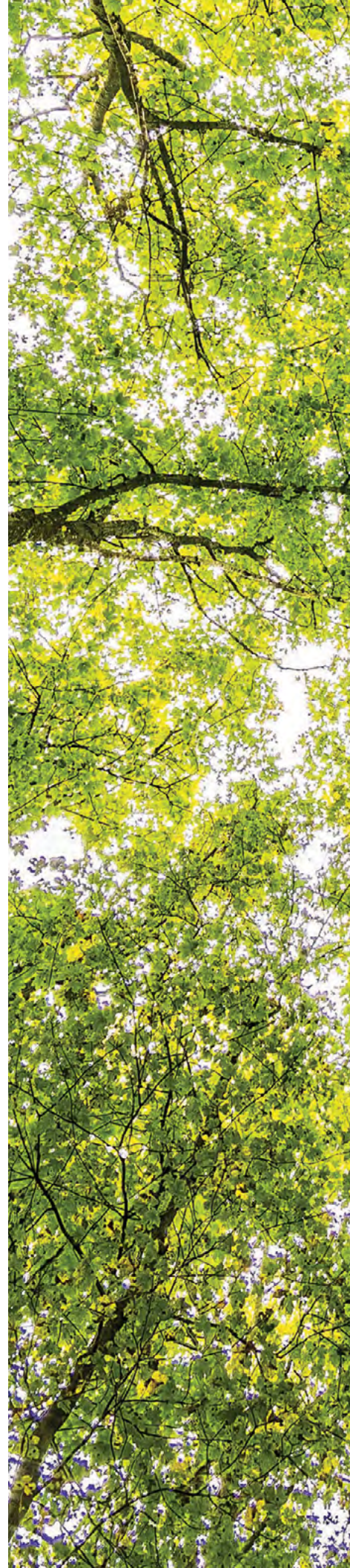
Students have the opportunity to build relationships with other ambassadors and mentors while researching topics that impact our community and the world.

While serving as an ambassador, students build skillsets employers want in college graduates, such as teamwork, communication, creativity and time management.

Industry mentors work with ambassador teams to research and communicate equitable solutions around energy and climate. In collaboration, teams explore topics such as impacts of energy sources, public policy, industry opportunities and community leadership. This network provides unique access to industry professionals' mentorship and potential inclusion in career-related industry opportunities (e.g. marketing/outreach/business services, engineering, IT, earth sciences).

This program is supported by U.S. Department of Energy's American Made Challenges Inclusive Energy Innovation Prize.

Learn more at [tricities.wsu.edu/energy](https://tricities.wsu.edu/energy).



## **Environmental & Ecosystem Sciences**

Environmental and ecosystem sciences is the study of different environments and their interactions with biological systems. Those studying environmental and ecosystem sciences use chemistry, biology, ecology, physics and statistics to solve environmental challenges. WSU Tri-Cities is also an active partner for research concerning environmental clean-up at the Hanford Nuclear Site, environmental preservation and protections and the study of worldly impacts on the environment. Learn from the best in the heart of a region known for science.

Learn more at [tricities.wsu.edu/environmental-science](https://tricities.wsu.edu/environmental-science).

## **Biology**

Biology is the science of life. The study of biology encompasses molecular, cellular, and physiological processes, evolutionary diversity, ecological relationships, and global systems. Biologists study life from prehistoric times to organisms alive today and model how life may change in the future. WSU Tri-Cities provides excellent preparation for medical school and other health care fields (such as optometry, dentistry, nursing, pharmacy, or physical/occupational therapy) through the pre-health sciences track.

Learn more: [tricities.wsu.edu/biology](https://tricities.wsu.edu/biology).



## **BSEL researchers create sustainable products for a cleaner future**

WSU Tri-Cities is home to the Bioproducts, Sciences, and Engineering Laboratory (BSEL), a state-of-the-art facility where scientists focus on carbon utilization. For example, carbon utilization leverages renewable carbon to produce sustainable products used in transportation and buildings. BSEL opens the door for unique industry partnerships and brings ground-breaking graduate study and research to the Tri-Cities. **Pacific Northwest National Laboratory** and WSU share the space creating a more collaborative working environment.

Learn more at [tricities.wsu.edu/bsel](https://tricities.wsu.edu/bsel).





**Peter Christenson, assistant professor of fine arts** interacting with a Digital Technology & Culture student's multimedia project at the Research & Design Symposium.

### Digital Technology & Culture

Through the Digital Technology and Culture(DTC) program, students learn about a range of multimedia tools to create art, critically analyze media and craft designs. Students in DTC develop skills in web design, animation, graphic design, video production, virtual reality and other emerging technologies.

Learn more at [tricity.wsu.edu/dtc](https://tricity.wsu.edu/dtc).

### Fine Arts

Art enriches our lives and challenges our understanding of the world around us. The study of art encompasses all forms of visual creative production, including 2D and 3D design, drawing, painting, sculpture, photography, video, and installation.

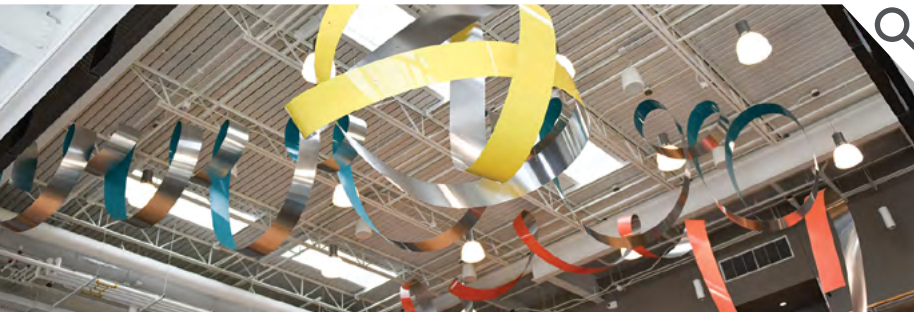
Learn more at [tricity.wsu.edu/fine-arts](https://tricity.wsu.edu/fine-arts).

### English

English is the study of the written word. Those studying English critically explore the culture of literature, writing, and speech in print and electronic media.

Learn more at [tricity.wsu.edu/english](https://tricity.wsu.edu/english).

2D art course student stands next to his self-portrait titled "Mirrors" at the Research & Design Symposium.



#### Ribbon Writing, 2021

*Paul Vexler*

Comprised of three ribbons of painted aluminum, suspended in the main atrium of the Collaboration Hall. Vexler likens the sculptures to Arabic calligraphy. The sculpture hints at verbal and visual worlds of meaning that are sometimes read and sometimes simply known. Two of the ribbons (in orange and teal) undulate and zig-zag across the space, while the yellow ribbon is formed like a knot.

### Humanities

Humanities provides students with a broad critical and cultural understanding of world cultures and civilizations. Simultaneously, students gain writing and analytical skills that are crucial to success in the university, graduate school and the workplace.

The humanities degree is ideal for you if you want the flexibility to design your own program of study that will help you meet your academic and career goals.

Learn more at [tricity.wsu.edu/humanities](https://tricity.wsu.edu/humanities).

### Social Science

Social sciences emphasizes the social, political, economic and religious institutions of human society.

The social sciences degree is ideal for you if you want the flexibility to design your own program of study that will help you meet your academic and career goals.

Learn more at [tricity.wsu.edu/social-sciences](https://tricity.wsu.edu/social-sciences).

### Psychology

Psychology is the scientific study of how people think, feel and behave. This degree emphasizes both the experimental and applied aspects of the discipline. Those studying psychology gain fundamental training in neuroscience, cognitive psychology, statistical analysis and scientific methodology.

Learn more at [tricity.wsu.edu/psychology](https://tricity.wsu.edu/psychology).

### History

A degree in history provides students with the ongoing opportunity to study and understand the diverse people, institutions, and cultures of the past.

WSU Tri-Cities faculty specialize in many areas of historical research and teaching, including American west, religious, gender, race and culture, political, military, diplomatic history, and Hanford History.

Learn more at [tricity.wsu.edu/history](https://tricity.wsu.edu/history).



#### Preserving and Interpreting Our Past

The **Hanford History Project** provides academic and historical gateways for students and the general public. The Hanford History Project is an archive and curatorial repository focusing on the Hanford site and the Tri-Cities region.

Students in the humanities and history programs are great candidates for many of the projects internship opportunities!



## Advice from a *Coug!*

*“Do it! If you are passionate about education and supporting the growth of young minds do it! This program is great because of its location and it offers students many opportunities and choices to grow their experience as future educators. This campus has faculty who are passionate about education, knowledgeable and care about what content they teach, along with caring for students feedback.”*

- ROSA PEREZ CASTILLO,  
Elementary Education Alumna

*“Education is the passport to the future, for tomorrow belongs to those who prepare for it today.”*

—MALCOLM X

### Elementary Education

The elementary education program provides the skills and knowledge to teach and guide school children in kindergarten through 8th grade, and prepares you to make a difference in the communities where you serve. Students choose an endorsement area and customize their classes based on their interests.

Learn more at [tricities.wsu.edu/education](https://tricities.wsu.edu/education).

### Alternative Route Program

Make the leap from parapro to teacher. The Alternative Route program at WSU Tri-Cities recognizes the expertise that paraprofessionals bring with them from the classroom and works with them to apply those skills in the university.

Learn more at [tricities.wsu.edu/education](https://tricities.wsu.edu/education).

### Teaching Bridge Program

Teaching Bridge is a partnership between WSU Tri-Cities, area school districts, KSD, ESD 123, and community-based organizations.

It provides a unique opportunity for high school students interested in careers in teaching to:

- Get support during the college application and financial aid process
- Earn while you learn as a substitute paraeducator during your first two years at WSU Tri-Cities
- Get high-value learning and mentoring experiences on the job
- Learn with high-impact faculty
- Get a jumpstart on your teaching career

Learn more at [tricities.wsu.edu/teaching-bridge](https://tricities.wsu.edu/teaching-bridge).



Jesus Bravo, professor of business at WSU Tri-Cities Carson College of Business, researches mentoring relationships and fairness perceptions in the workplace. He works with students in the classroom to share his passion for business.

*Gain business knowledge,  
experience & global  
perspective in and out of  
the classroom.*

### *Learn from the best*

– as a top-20 ranked institution via U.S. News & World Report, you know you will graduate with a coveted degree that employers want.

### Business Administration

Business administration is the study of how a business is run. This degree provides students with a strong foundation in business processes, including business ethics, team organization, data analysis, finance and more. The study of business reflects the multitude of ways business is conducted today, from small person-to-person interactions, to large corporations.

Learn more at [tricities.wsu.edu/business](https://tricities.wsu.edu/business).

### Management

The WSU Tri-Cities management major has been developed for students interested in pursuing a career as a professional manager. In addition to learning vital management skills such as planning, organizing, leadership, and controlling, students will gain marketable skills.

Learn more at [tricities.wsu.edu/management](https://tricities.wsu.edu/management).

### Hospitality Business Management

The hospitality business management degree focuses on management operations in the field of hospitality. This includes food and beverage business, tourism, lodging, and more.

This is a degree program ideal for those interested in managing or starting their own business catered toward customer service, as well as those interested in the tourism, lodging, food and beverage industries.

Learn more at [tricities.wsu.edu/hbm](https://tricities.wsu.edu/hbm).

*The Carson College of Business is fully accredited by the Association to Advance Collegiate Schools of Business (AACSB), a status held by only 2% of business schools worldwide.*

# Healing the Mind and the Body



## College of Nursing

Whether you are a Registered Nurse (RN) wanting to advance your career with a bachelor of science in nursing, or a student wanting to enter the nursing profession, **we can help you achieve your goals.**

The WSU College of Nursing offers undergraduate, graduate and professional degrees in nursing.

With fewer students in your cohort, you'll have more one-on-one faculty involvement and smaller groups in

simulations and in the experiential practice lab, including more one-on-one instruction from preceptors during clinical experiences.

Clinical rotations are offered at sites including Trios Health, Prosser Memorial Hospital, Kadlec Regional Medical Center, Lourdes Health, Columbia Basin Health Association, Tri-Cities Community Health, and Washington State Veterans Administration.

Learn more: [tricities.wsu.edu/nursing](https://tricities.wsu.edu/nursing).

## Elson S. Floyd College of Medicine

Equipping students to become health care leaders of the future, ready to serve in communities where they are needed most.

WSU Tri-Cities is a clinical location for the Elson S. Floyd College of Medicine. Graduate with a bachelors at WSU and let us help provide a pathway to your medical career.

Learn more at [medicine.wsu.edu](https://medicine.wsu.edu).

# Find a pathway that fits... **YOU!**

## College of Arts & Sciences

### Bachelor Programs

Biology  
Digital Technology and Culture  
English  
Environmental and  
Ecosystem Sciences  
Fine Arts  
General Science  
History  
Humanities  
Psychology  
Social Sciences

### Graduate Programs

Biology  
Chemistry  
Environmental Science  
Environmental and  
Natural Resource Science

## Carson College of Business

### Bachelor Programs

Accounting (Pathway)  
Business Administration  
Hospitality Business Management  
Management  
Wine and Beverage Business

## College of Agricultural, Human and Natural Resource Sciences

### Bachelor Programs

Viticulture and Enology (Wine Science)

### Graduate Programs

Biological & Agricultural  
Engineering, M.S., Ph.D.  
Food Science, M.S., Ph.D.  
Horticulture, M.S. Ph.D.

## College of Education

### Bachelor Programs

Elementary Education  
Add-on endorsements  
Bilingual Education  
English Language Learners  
Middle Level Mathematics  
Middle Level Science  
Special Education

### Alternative Route,

Elementary Education  
Add on endorsements  
Bilingual Education  
English Language Learners  
Special Education

### Graduate Programs

Curriculum & Instruction, Ed.M.  
Educational Leadership, Ed.M., Ed.D.  
Language Literacy and  
Technology, Ed.M.  
Mathematics & Science Education, Ph.D.  
Special Education, Ph.D.  
Teaching, Elementary Education, M.I.T.  
Teaching Secondary Education, M.I.T.

## Voiland College of Engineering and Architecture

### Bachelor Programs

Civil Engineering  
Computer Science  
Cyber Security  
Electrical Engineering  
Mechanical Engineering

### Graduate Programs

Chemical Engineering, M.S., Ph.D.  
Civil and Environmental  
Engineering, M.S., Ph.D.  
Computer Science, M.S., Ph.D.  
Electrical Engineering, M.S., Ph.D.  
Mechanical Engineering, M.S., Ph.D.

## College of Nursing

### Bachelor Programs

Bachelors of Science in Nursing  
Registered Nurse to Bachelors of  
Science in Nursing (RN to BSN)

### Graduate Programs

Master of Nursing, MN  
Doctors of Nursing Practice, DNP

[tricities.wsu.edu/degrees](https://tricities.wsu.edu/degrees) 

## Not sure about a major? That's OK!

Take the **MyMajors Quiz** and it will identify which majors are the best fit for you based on your passions, strengths and personality.

Quiz results will also display salary data for individuals who graduated from each of the recommended degree programs.

**Take the MyMajors Quiz** [tricities.wsu.edu/mymajorsquiz](https://tricities.wsu.edu/mymajorsquiz)



“The experiences and relationships I gained at CBC challenged a lot of the assumptions I held about higher education. It taught me the only ‘right’ way to get a degree is whatever way works best for each student. I’ve found that I do my best in stimulating classes where I can readily receive support and feedback from my professors, which is why transferring to WSU Tri-Cities was such an easy choice. It has the academic resources of a full-scale university with class sizes half as big, making it easier to form relationships with my peers and professors while also being challenged. I never expected to pursue higher education in Tri-Cities, but it’s turned out to be an experience I’m truly grateful for.

- CARTER MITCHELL,  
current student

## TRANSFER YOUR CREDITS

[tricity.wsu.edu/transfer](https://tricity.wsu.edu/transfer)

More than 80% of WSU students enter with college credits.  
We’re here to help you use the credits you’ve earned to get the degree you want!



# How To Pay for College

## IT’S WORTH THE INVESTMENT

### A “BEST VALUE” COLLEGE

WSU was selected by the Princeton Review as one of the “Best Value Colleges” for 2022. The selection is based on return on investment for graduates due to WSU’s academics, affordability, and career preparation.

On average, a bachelor’s degree brings \$1.2 million more than a high school diploma in lifetime earnings. (*Georgetown University CEW, 2021*)

The average mid-career salary for WSU graduates with a bachelor’s degree is **\$110,100 - which is ranked among the top 16% of 4-year universities** in the U.S. (*PayScale College Salary Report, 2021-2022*)

### FINANCIAL AID ESTIMATOR AND NET PRICE CALCULATOR

Learn the amount of financial aid you could qualify for at WSU and determine your estimated net costs of attending college, including tuition and more at [tricity.wsu.edu/aid-estimator](https://tricity.wsu.edu/aid-estimator).

### COUGAR MONEY MATTERS

Get financial planning advice, build a plan of how you’ll pay for college, and more at [cougarmoneymatters.wsu.edu](https://cougarmoneymatters.wsu.edu).

### ESTIMATED COST\* (per semester)

	WA RESIDENT	NON-WA RESIDENT
Tuition	\$5,617	\$13,459
Per Credit (1-10 Credits)	\$561	\$1,345
Mandatory Fees	\$215	\$215
Books	\$480	\$480

\*Costs are subject to change.

Learn more at [tricity.wsu.edu/tuition](https://tricity.wsu.edu/tuition).



Wind Riders, 2002  
Peter and Sue Richards

Wind is a strong natural phenomenon in the Tri-Cities area of southeastern Washington. Local Native American stories tell of the struggles between warm and cold winds the area. This relationship between wind and the surrounding landscape inspired the creation of the sculptures. It is comprised of three wind vanes made from repurposed bicycles. The artists mounted the bicycles to 20-foot poles, which swing freely to show the direction of the prevailing wind.

# FINANCIAL AID OPPORTUNITIES

[tricities.wsu.edu/financial-aid](http://tricities.wsu.edu/financial-aid)

## FREE APPLICATION FOR FEDERAL STUDENT AID (FAFSA)

Submit your FAFSA by the **March 31** priority date to be considered for the maximum amount of financial aid available to you. (Strongly encouraged) [fafsa.gov](http://fafsa.gov)

## WASHINGTON APPLICATION FOR STATE FINANCIAL AID (WASFA)

Qualifying undocumented students and other select applicants from Washington state should submit the WASFA by the March 31 priority deadline to determine their state financial aid eligibilty, including grants, work-study, and general scholarships. [wsac.wa.gov/wasfa](http://wsac.wa.gov/wasfa)

## SCHOLARSHIPS

We can help. WSU offers a variety of awards based on both merit and need, including those listed below.

For maximum consideration, you must complete your admission requirements (application, fee, and transcripts) and the WSU General Scholarship Application by January 31. You can also search for thousands of additional scholarships, both at WSU and from other organizations, at [tricities.wsu.edu/scholarships](http://tricities.wsu.edu/scholarships).

## WASHINGTON RESIDENT SCHOLARSHIPS

- **Tri-Cities First-Year Academic Distinction Award** - Resident first-year students with a minimum of 3.75 unweighted GPA are automatically awarded \$4,000 per year, for a total of \$16,000 over four years. Students must apply by the priority deadline of March 31 to be considered.
- **Tri-Cities First-Year Academic Excellence Award** - Resident first-year students with a minimum of 3.3 - 3.74 GPA are automatically awarded \$3,000 per year, for a total of \$12,000 over four years. Students must apply by the priority deadline of March 31 to be considered.
- **Tri-Cities First-Year Academic Success Award** - Resident first-year students with a minimum of 3.0 - 3.29 GPA are automatically awarded \$2,000 per year, for a total of \$8,000 over four years. Students must apply by the priority deadline of March 31 to be considered.
- **Tri-Cities Transfer Cougar Award** - Resident transfer students with a minimum of 3.5 unweighted GPA and at least 27 semester (40 quarter) credits are automatically awarded \$2,000 per year, for a total of \$4,000 over two years. Students must apply by the priority deadline of July 15 to be considered.

## NON-RESIDENT SCHOLARSHIPS

- **Tri-Cities Distinguished Cougar Award (First-Year WUE)** - Non-resident first-year students with a minimum of 3.0 unweighted GPA are automatically awarded \$11,000 per year, for a total of \$44,000 over four years. Students must apply by the priority deadline of March 31 to be considered.
- **Tri-Cities Transfer Cougar Award (WUE)** - Non-resident transfer students with a minimum of 3.0 unweighted GPA are automatically awarded \$11,000 per year, for a total of \$44,000 over four years. Students must apply by the priority deadline of July 15 to be considered.

## JOBS AND WORK-STUDY

There are hundreds of student-friendly jobs in the Tri-Cities area, both on campus and off. With Washington’s \$15.74 per hour minimum wage and work-study offerings, working part-time during college is worth it. Find a position that fits you with your WSU student job board, Handshake. Learn more at [tricities.wsu.edu/careercenter](http://tricities.wsu.edu/careercenter).

# APPLYING FOR ADMISSION

## STEPS TO APPLY

- Complete the application at [tricities.wsu.edu/apply](http://tricities.wsu.edu/apply)  
If you’re a first-year student applying to different schools, you can also use the Common App
- Upload your high school and/or college transcripts
- Pay the \$70 application fee or or request a fee waiver

Connect with an admission counselor at [rep.wsu.edu](http://rep.wsu.edu) to get your questions answered today!



## COLLEGE ACADEMIC DISTRIBUTION REQUIREMENTS (CADRS)

To be eligible for admission, you will need to complete high school courses in these areas. Confirm course eligibilty at [cadr.wsu.edu](http://cadr.wsu.edu).

English	4 years
Mathematics	3 years
(must include Algebra II or Integrated Math III)	
Senior year math-based quantitative course	1 year
Examples: statistics, advanced level of applied math, math-based career and technical courses, chemistry, physics, etc. Students who have completed math beyond Algebra II or Integrated Math III, prior to the senior year, are exempt from this requirement.	
Social sciences	3 years
Science	3 years
(must include two years of lab courses including one algebra-based course)	
World languages	2 years
Arts	1 year (or an additional year of any other course above)

## 2023 - 2024 TIMELINE

### November 18

Fall Preview Day

### December

FAFSA and WASFA applications open

### January 31

WSU General Scholarship Application deadline

### February 9

Spring Transfer Day

### March 16

Spring Preview Day

### March 31

Application priority date for first-year students  
FAFSA and WASFA priority deadline

### April 13

Admit Day & Crimson Fest

### May 1

Confirmation date  
Confirm your admission by this date and submit your \$200 non-refundable tuition deposit to secure your spot at WSU Tri-Cities

### July 15

Application priority date for transfer students

## COLLEGE-LEVEL COURSEWORK

If you have completed college-level coursework while in high school, you should apply as a first-year student to WSU. You will receive applicable college credit after we receive an official college transcript. [transfercredit.wsu.edu](http://transfercredit.wsu.edu) | [catalog.wsu.edu](http://catalog.wsu.edu)

## AP, IB, CLEP, & CAMBRIDGE CREDIT

WSU awards credit for acceptable scores on Advanced Placement (AP), International Baccalaureate (IB), CLEP, and Cambridge A-Level exams.



# Where in Washington is WSU Tri-Cities?

WSU is Washington's land-grant university with campuses located statewide in Everett, Pullman, Spokane, Tri-Cities, and Vancouver. For those who are always on-the-go, WSU Global is an option, too!

WSU also has research centers located throughout the state, extension offices in every county, and offers online degree programs that are accessible worldwide. Learn about WSU's statewide reach.

## How to Get Here

Depending on where you're headed from, your travel time to the Tri-Cities could be faster than a Monday morning wait at the Starbucks drive-thru.

### By Air

1 airport  
6 airlines  
10 cities serviced non-stop

### By Car

Drive times from/to:  
Spokane, WA - 2 hrs 25 min  
Portland, OR - 3 hrs 15 min  
Seattle, WA - 3 hrs 30 min  
Bend, OR - 4 hrs 30 min  
Boise, ID - 4 hrs 30 min  
Vancouver, B.C. - 5 hrs 50 min

### Acknowledgement of America's First Peoples

WSU Tri-Cities is located on shared traditional homelands of the Confederated Tribes of the Umatilla Indian Reservation and the Confederated Tribes and Bands of the Yakama Nation.

## Enjoy all four seasons!

AVERAGE HIGH TEMPS

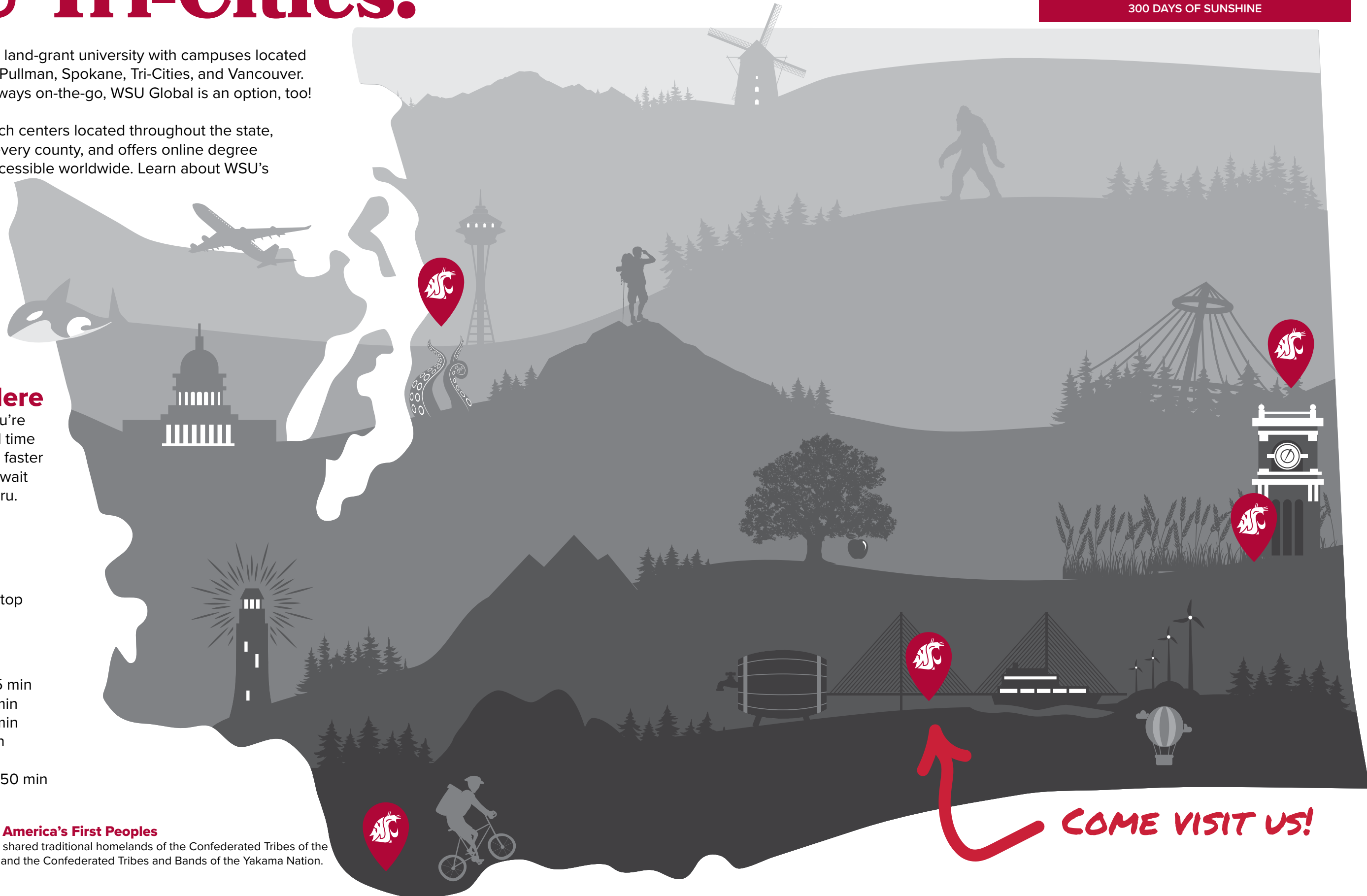
  
August 89°

  
October 66°

  
January 40°

  
April 66°

300 DAYS OF SUNSHINE



COME VISIT US!



Connect with other Cougs today: Follow @WSUTriCities    

# Feel the Coug Spirit<sup>®</sup> In-Person or Virtually

The best way to get to know WSU Tri-Cities, and envision yourself as a student here, is to experience campus for yourself.

## We offer a variety of ways to visit campus:

### Appointments

Schedule an appointment with an admission counselor either in-person or virtually to talk one-on-one about your goals, admission process, understanding financial aid and scholarship, academic programs and more.

### Campus Tours

Schedule a campus tour led by current students to find out what it's really like to be a student at WSU Tri-Cities. Follow up with an admission counselor after your tour to ask any additional questions you might have about the admission process, understanding financial aid and scholarship, academic programs and more. [tricity.wsu.edu/visit](https://tricity.wsu.edu/visit)

### Campus Events

Watch your email for information about campus events throughout the year. If you're not receiving emails from us, submit a Request for Information form! [tricity.wsu.edu/rfi](https://tricity.wsu.edu/rfi)

Si tiene preguntas y necesita comunicaciones en español, por favor envíe un correo electrónico en español a [tricity.admissions@wsu.edu](mailto:tricity.admissions@wsu.edu)



WASHINGTON STATE UNIVERSITY  
**TRI-CITIES**

**Undergraduate Admissions** Suite 201 Elson S. Floyd building, 2710 Crimson Way,  
Richland, WA 99354 | [tricity.admissions@wsu.edu](mailto:tricity.admissions@wsu.edu) | 509-372-7250